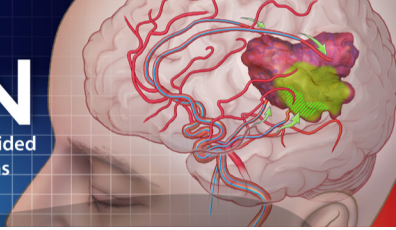




SIGN
Society for Image-Guided
Neurointerventions



SOCIETY FOR IMAGE-GUIDED NEUROINTERVENTIONS (SIGN)

DAY 1, JUNE 25, 2018 | STASZIC PALACE, WARSAW

- 10:45 – 10:50** **WELCOME ADDRESS | JERZY WALECKI**
Chair of Radiology Department and Medical Physics Committee,
Polish Academy of Sciences, Warsaw, Poland
- 10:50 – 11:00** **INCORPORATION OF THE SIGN |**
MIROSLAW JANOWSKI, MONICA PEARL, PIOTR WALCZAK, MICHAL ZAWADZKI

SESSION I

CURRENT STATUS AND APPLICATIONS OF IMAGE-GUIDED NEUROINTERVENTION IN LABORATORY AND CLINICAL PRACTICE

CHAIR: JERZY WALECKI, BARBARA LUKOMSKA

- 11:00 – 11:20** **MIROSLAW JANOWSKI**
The Johns Hopkins University School of Medicine, Baltimore, MD, USA
HOW IT STARTED: A CHALLENGE OF STEM CELL DELIVERY TO THE BRAIN
- 11:20 – 11:40** **MONICA PEARL**
The Johns Hopkins University School of Medicine, Baltimore, MD, USA
PRECISE AND PREDICTABLE BLOOD BRAIN BARRIER OPENING IN LARGE ANIMAL MODELS
- 11:40 – 12:00** **PIOTR WALCZAK**
The Johns Hopkins University School of Medicine, Baltimore, MD, USA
ULTRA-FAST MRI USING UNDERSAMPLED FLASH SEQUENCE TO VISUALIZE THE PROCESS OF BBB OPENING IN A CANINE MODEL
- 12:00 – 12:20** **MICHAL ZAWADZKI**
Central Clinical Hospital of Ministry of the Interior and Administration
in Warsaw, Poland
FIRST-IN-HUMAN REAL-TIME MRI-GUIDED INTRA-ARTERIAL NEUROINTERVENTION
- 12:20 – 12:50** **COFFEE BREAK** ☕



SESSION II

ADDRESSING THE NEEDS OF MRI NEUROINTERVENTIONS

CHAIR: [WOJCIECH MAKSYMOWICZ](#), [MONICA PEARL](#)

12:50 – 13:10

QIN QIN

[The Johns Hopkins University School of Medicine, Baltimore, MD, USA](#)
MAGNETIC RESONANCE ANGIOGRAPHY AS A ROADMAP FOR INTRA-ARTERIAL NEUROINTERVENTIONS

13:10 – 13:30

PARAG KARMARKAR

[The Johns Hopkins University School of Medicine, Baltimore, MD, USA](#)
A LANDSCAPE OF MRI-COMPATIBLE CATHETERS

13:30 – 13:50

RAFI DE PICCIOTTO

[Insightec](#)

FOCUSED ULTRASOUND FOR MRI-GUIDED BLOOD BRAIN BARRIER DISRUPTION

13:50 – 14:10

INDUSTRY SILVER SPONSOR PRESENTATION | [PHILIPS HEALTHCARE](#)

14:10 – 15:00

LUNCH BREAK 

SESSION III

PERSPECTIVE FOR GROWTH AND FUTURE APPLICATIONS

CHAIR: [TIM MAGNUS](#), [MACIEJ SZAJNER](#)

15:00 – 15:20

SEAN SAVITZ

[University of Texas Health Sciences Center Houston, USA](#)
INTRAAARTERIAL CELL THERAPIES IN STROKE

15:20 – 15:40

VINCENT COSTALAT

[Montpellier University Hospital, Montpellier, France](#)

SELECTIVE DESTRUCTION OF BRAIN PARENCHYMA : THE NEXT STEP FOR NEUROINTERVENTION

16:00 – 18:00

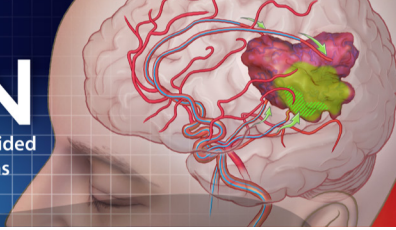
TOUR OF THE CITY 

19:00 – 22:00

DINNER 



SIGN
Society for Image-Guided
Neurointerventions



SOCIETY FOR IMAGE-GUIDED NEUROINTERVENTIONS (SIGN)

DAY 2, JUNE 26, 2018 | WARSAW UNIVERSITY OF LIFE SCIENCES, WARSAW

09:00 – 09:20 **WELCOME ADDRESS AND PRESENTATION OF THE LIFE SCIENCES CENTER**
ZDZISLAW GAJEWSKI
Director, Warsaw University of Life Sciences, Poland

SESSION I


TECHNOLOGIES AND TOOLS AIDING NEUROINTERVENTION

CHAIR: VINCENT COSTALAT, PIOTR WALCZAK

- 9:20 – 9:40** **TIM MAGNUS**
University Medical Center Hamburg-Eppendorf, Germany
NEUROINFLAMMATION AS A THERAPEUTIC TARGET IN STROKE
- 9:40 – 10:00** **RAFAEL GUZMAN**
University Hospital Basel, University of Basel, Switzerland
ENDOGENOUS NEUROGENESIS AS A POTENTIAL THERAPEUTIC TARGET IN STROKE
- 10:00 – 10:20** **AMNON BAR-SHIR**
Weizman Institute of Science, Rehovot, Israel
NOVEL STRATEGIES FOR CELLULAR MR IMAGING: MOLECULAR DESIGN & CONTRAST MECHANISMS
- 10:20 – 10:40** **WIESLAW NOWINSKI**
University of Cardinal Stefan Wyszyński in Warsaw, Poland
MODELING OF VASCULATURE IN INTERVENTIONAL RADIOLOGY SIMULATION
- 10:40 – 11:00** **WOJCIECH LESNIAK**
The Johns Hopkins University School of Medicine, Baltimore, MD, USA
APPLICATION OF POSITRON EMISSION TOMOGRAPHY IN INTRA-ARTERIAL THERAPEUTICS DELIVERY INTO BRAIN
- 11:00 – 11:20** **INDUSTRY GOLD SPONSOR PRESENTATION | GE HEALTHCARE**
- 11:20 – 11:50** **COFFEE BREAK** ☕



EXPERIMENTAL SESSION: **MODELING STROKE IN LARGE ANIMAL**

- 11:50 – 12:10 **DOMINIKA GOLUBCZYK**
University of Warmia and Mazury, Olsztyn, Poland
ENDOVASCULAR MODEL OF STROKE IN SWINE
- 12:10 – 14:00 **INDUCTION OF ENDOVASCULAR MRI-GUIDED STROKE MODEL IN PIG**
- 13:00 – 14:00 **LUNCH BREAK** 

SESSION II

PRECLINICAL STUDIES: APPLICATIONS

CHAIR: MICHAL ZAWADZKI, MIROSLAW JANOWSKI

- 14:00 – 14:20 **PETER LUDEWIG**
University Medical Center Hamburg-Eppendorf, Germany
MAGNETIC PARTICLE IMAGING FOR NEUROLOGICAL APPLICATIONS
- 14:20 – 14:40 **PIOTR DZIEDZIC**
Johns Hopkins University, School of Medicine, Baltimore, MD, USA
MULTIMODALITY NEUROMONITORING INTEREST GROUP: MINING PROJECT
- 14:40 – 15:00 **CHENGYAN CHU**
The Johns Hopkins University School of Medicine, Baltimore, MD, USA
INTRAARTERIAL CHEMOTHERAPY OF GLIOBLASTOMA FOLLOWING HYPEROSMOLAR OPENING OF THE BLOOD-BRAIN BARRIER UNDER REAL-TIME MRI GUIDANCE
- 15:00 – 15:20 **LUKASZ KALKOWSKI**
University of Warmia and Mazury, Olsztyn, Poland
MRI-GUIDED CONVECTION-ENHANCED DELIVERY TO THE BRAIN
- 15:20 – 15:40 **MIGUEL OLIVEIRA**
University of Minho, Guimaraes, Portugal
HYDROGELS IN MRI GUIDED DELIVERY AND TISSUE REGENERATION: WHERE ARE WE?
- 15:40 **CONFERENCE WRAP-UP**
MIROSLAW JANOWSKI, MONICA PEARL, PIOTR WALCZAK, MICHAL ZAWADZKI